



# ROTHERHAM DEMENTIA CARER SUPPORT



Is someone you care for experiencing memory loss, forgetfulness, confusion or other effects of dementia?

If yes, we are here to help.



[www.makingspace.co.uk](http://www.makingspace.co.uk)

When a relative, friend or someone you directly care for is experiencing symptoms of dementia, it is good to know that neither you, nor they, have to be alone to meet the challenges ahead.

**We are here to help you live well with dementia.**

## 1-TO-1 SUPPORT

We know that being a carer can be challenging at times, which is why our friendly and compassionate team are with you every step of the way to make sure you receive the best possible support.



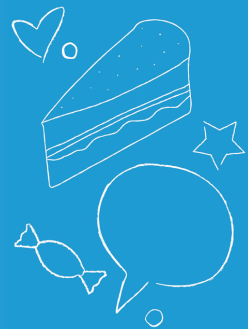
## MUSIC MEMORIES CAFÉS

Our cafés offer yourself, and the person you care for, the chance to meet others in a similar situation in a positive and relaxing atmosphere.

You can meet professionals and other carers and share knowledge with people who have first-hand experience of caring for those living with dementia.

**All our cafés feature live entertainment.**

**You can arrive from 1pm onwards to our cafés for support. Our staff are available from 1pm until 4pm, with activities starting from 1:30pm to 3:30pm.**



## THURCROFT

Gordon Bennett  
Memorial Hall,  
1 Green Arbour  
Road, S66 9DD  
**1:30pm - 3:30pm**

### 2025

1st April  
6th May  
3rd June  
1st July  
5th August

2nd September  
7th October  
4th November  
2nd December

### 2026

6th January  
3rd February  
3rd March

## BRAMPTON BIERLOW

Parish Hall,  
Knollbeck Lane,  
S73 0UA  
**1:30pm - 3:30pm**

### 2025

11th April  
9th May  
13th June  
11th July  
8th August

12th September  
10th October  
14th November  
12th December

### 2026

9th January  
13th February  
13th March

## DALTON

Dalton Parish Hall,  
Doncaster Road,  
Dalton, S65 3EW  
**1:30pm - 3:30pm**

### 2025

17th April  
15th May  
19th June  
17th July  
21st August

18th September  
16th October  
20th November  
18th December

### 2026

15th January  
19th February  
19th March

## MALTBY

The Wesley Centre,  
Blyth Road,  
S66 8JD  
**1:30pm - 3:30pm**

### 2025

28th April  
19th May  
23rd June  
28th July  
18th August

22nd September  
27th October  
24th November  
22nd December

### 2026

26th January  
23rd February  
23rd March

## BRINSWORTH

Parish Pavilion,  
Field View,  
S60 5DG  
**1:30pm - 3:30pm**

### 2025

16th April  
21st May  
18th June  
16th July  
20th August

17th September  
15th October  
19th November  
17th December

### 2026


21st January  
25th February  
18th March

If it's your first time at one of our groups, or you haven't been in a while, please contact us.




## CONTACT US

Get in touch today to find out how we can support you

 **Main line: 01709 910 889**  
**Amanda: 07713 089 678**  
**Jodie: 07973 762 446**  
**Linda: 07929 731 971**

 **RotherhamCarers@makingspace.co.uk**

 **Space Station, Doncaster Road,  
Kirk Sandall, Doncaster, DN3 1HE**

 **www.makingspace.co.uk**

 **@rotherhamcarers**

 **@carer\_support**



If you would like this leaflet in a different language or format, please contact [marketing@makingspace.co.uk](mailto:marketing@makingspace.co.uk)

### Head Office

Making Space, Lyne House, 46 Allen Street, Warrington, Cheshire, WA2 7JB  
Charity Number: 512907